

Welcome to
your local
library



Te Awamutu
Selwyn Lane



Open Monday
to Saturday

Meet some of our librarians who work in Te Awamutu



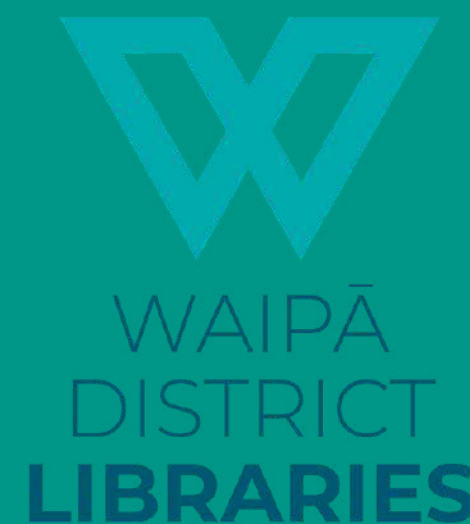
Donna



Louise



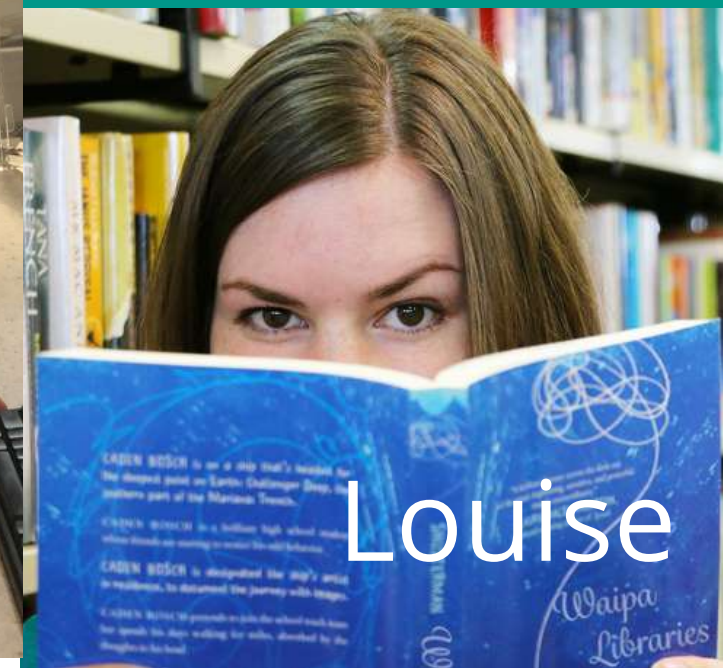
Hilary



Mel



Allyson



Louise

Welcome to our library!

This is what our
building looks like from
outside.



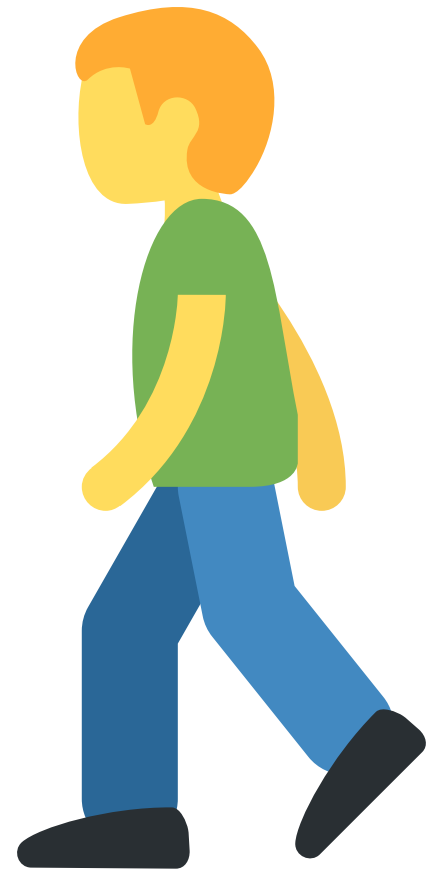
We're glad you're coming to visit!

Come inside!

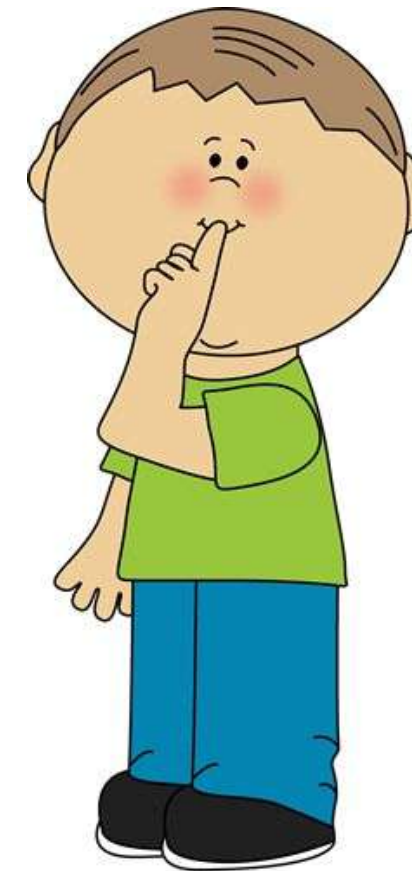
This is what the front doors
look like after you've entered
the building.



The doors open automatically



Walk don't run



**Use a quiet
voice**

**Stay with your
caregiver**



**Ask if you
need help**





Inside the doors

We often have a display set up inside the front doors.

Feel free to have a look.

Any books on display can be taken home on a library card.

Returns at Counter

Inside the door you will see a counter on the right.

If you have any items to return they can be placed in the hole in the bench marked returns.



Returns Shelf



Inside the door on the left you will also see another returns area which looks like a bookcase.

If you have any items to return they can be placed upright in here.

Front counter

You will pass the front counter on the way to the children's area. This is also where you can come to have your items issued.





**Welcome to
the children's
area**

There's lots to see
and do!



Read a book

Choose anything from a picture book, fiction book or non-fiction book.



Play with puzzles

We have wooden puzzles, floor puzzles and even hard puzzles!

What you can do here



Books for readers
of all ages



DVDs for Children
and Teens



Audio
Books



Puzzle Books



Children and Teen Magazines



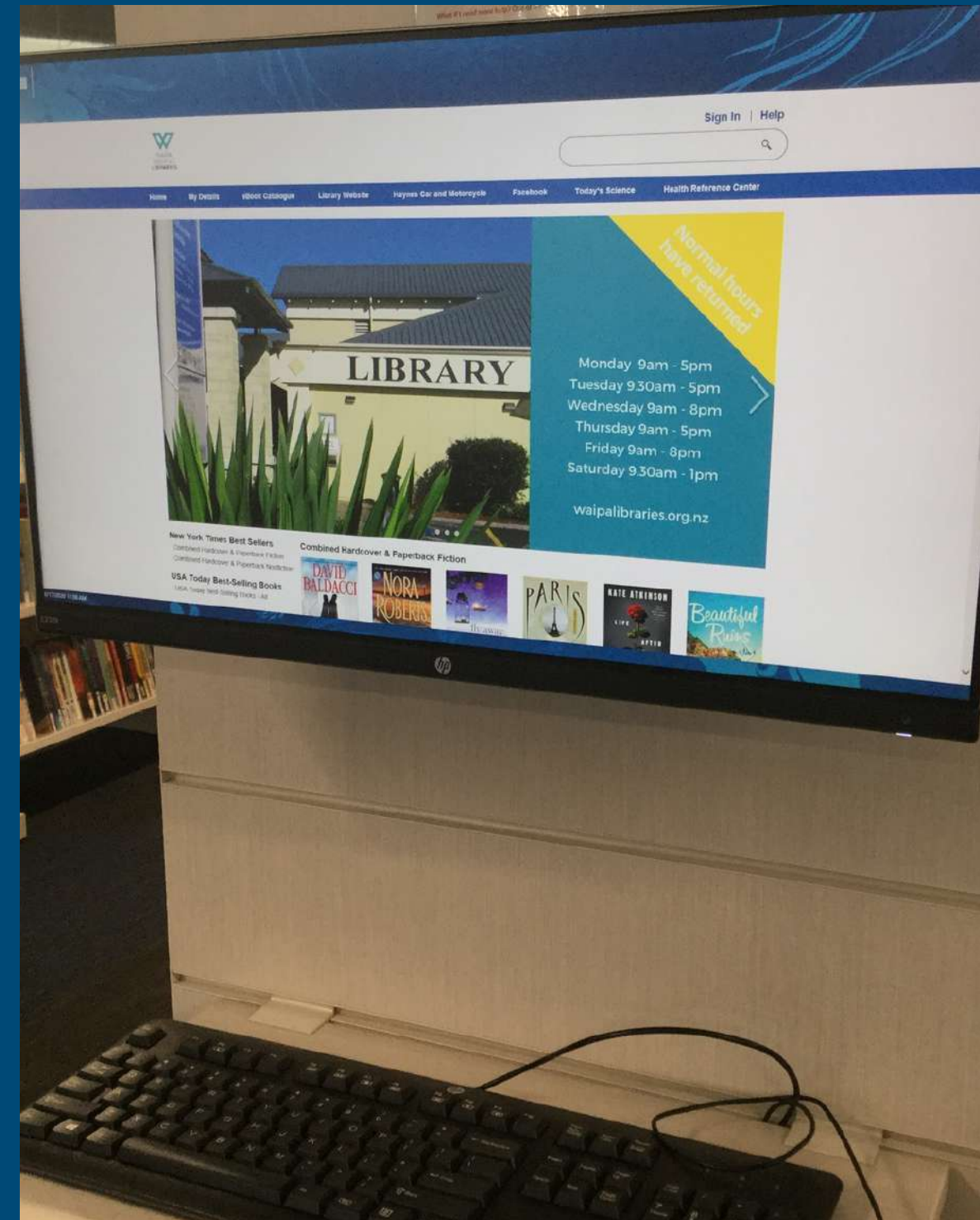
Children and Teen Graphic Novels



Looking for something in particular?

Use one of our catalogue computers to search.

Some are touch screens, others have a mouse.



Children's Programmes



Toddler Time

Stories, crafts and interactive fun. Suitable for children 3-5 years. Term time.



Wriggle & Rhyme

Active movement to music and bubble time! Suitable for children 0-3 years. Term time.

Children's Programmes



School Holidays

We offer crafts and reading programmes during most school holidays.



Makerspace

Hands on science, technology, engineering, arts and maths for 8-13 years. Term time.



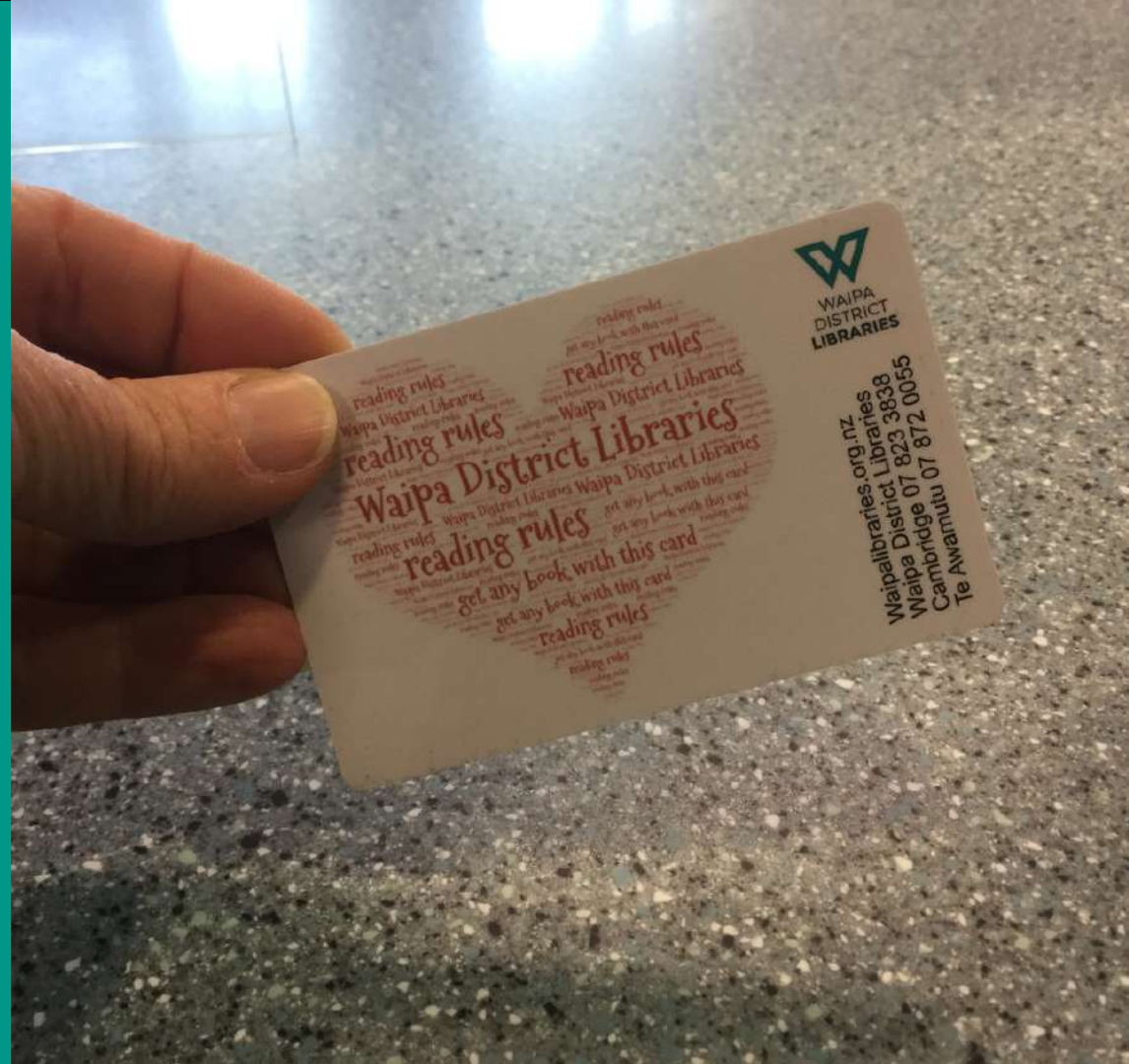
Things to note

You can take out 30 items on one library card. There is no charge for children's books and no overdue fees. Most items are issued for 3 weeks.

Something to take out?

Library card

You will need your library card to take out any items. If you don't have a library card come with your caregiver to sign up for one.



If you have chosen some items come to the counter to have them issued before you leave or use the self checkout.

Self Issue

You can issue items yourself using our self issue machines. Scan your library card to start then follow the instructions.



Thanks for visiting!



If the gates beep on the way out
just come back to the counter.