

Welcome to your local library



Cambridge
23 Wilson Street



Open Monday
to Saturday

Meet some of our librarians who work in Cambridge



Claire



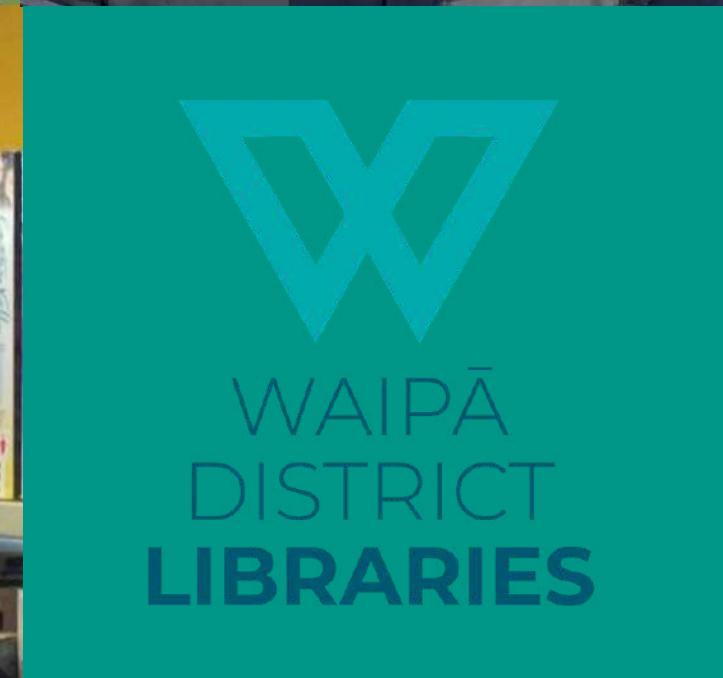
Jane



Reece



Heidi



WAIPĀ
DISTRICT
LIBRARIES



Dee



Nell



Chrissie

Welcome to our library!

This is what our
building looks like from
the carpark.



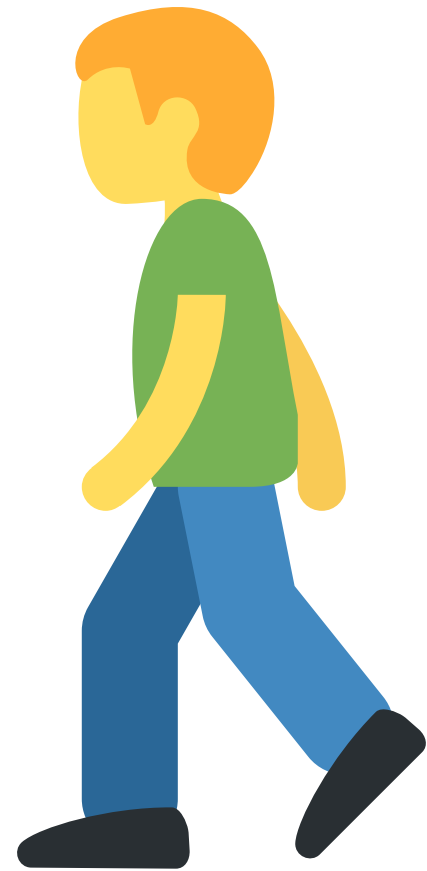
We're glad you're coming to visit!

Come inside!

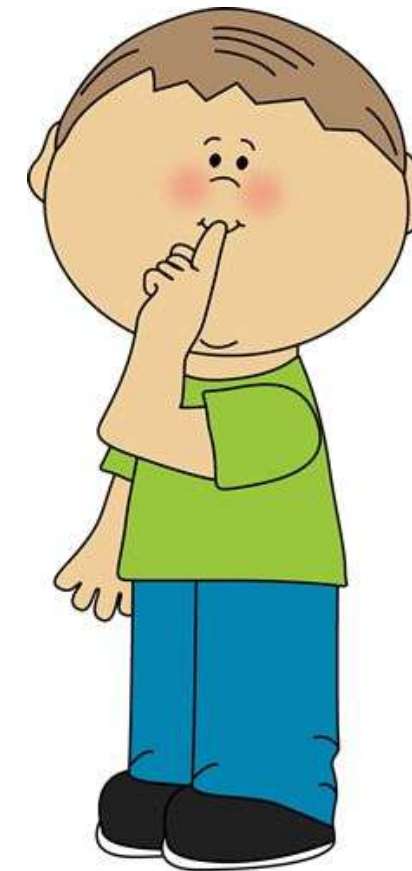
This is what the front doors look like after you've entered the building. We are on the right. The council is on the left. Bathrooms are straight ahead.



The doors open automatically



Walk don't run



**Use a quiet
voice**

**Stay with your
caregiver**



**Ask if you
need help**





Inside the doors

We often have a display set up inside the front doors.

Feel free to have a look.

Any books on display can be taken home on a library card.

Returns area

Inside the door you will see a returns shelf.

If you have any books to return they can be placed upright in the returns 'bookcase'



Front counter

You will pass the front counter on the way to the children's area. This is also where you can come to have your items issued.



Children



Welcome to the children's area

There's lots to see
and do!



Read a book

Choose anything from a picture book, fiction book or non-fiction book.



Play with puzzles

We have wooden puzzles, floor puzzles and even hard puzzles!

What you can do here



Books for readers
of all ages



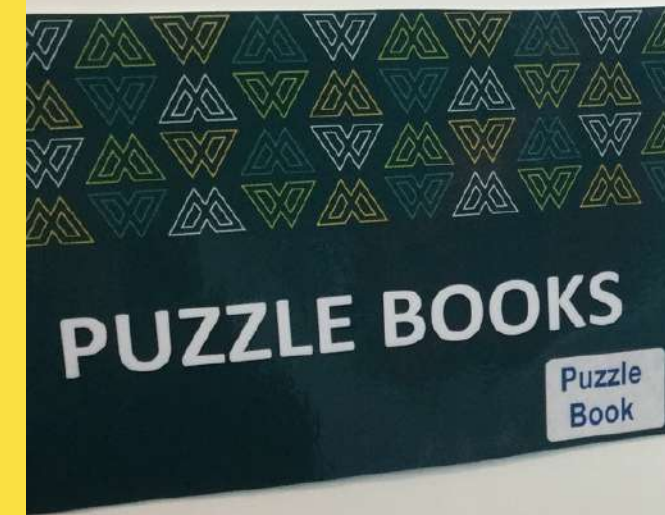
DVDs for Children
and Teens
(now located near
the entrance)



Audio
Books



Puzzle Books



Children and
Teen Magazines



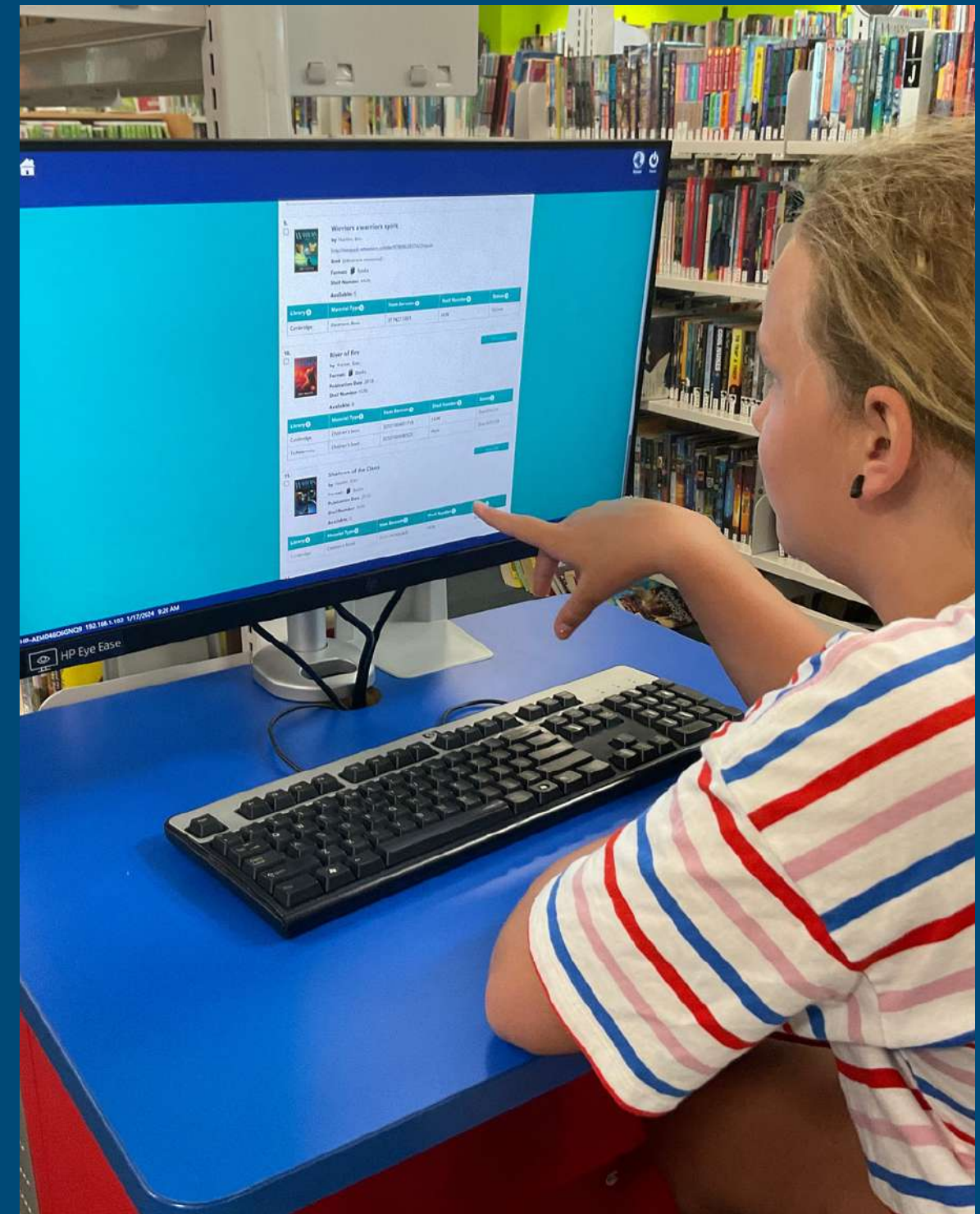
Children and
Teen Graphic
Novels



Looking for something in particular?

Use one of our catalogue computers to search.

Some are touch screens, others have a mouse.



Children's Programmes



Toddler Time

Stories, crafts and interactive fun. Suitable for children 3-5 years. Term time.



Wriggle & Rhyme

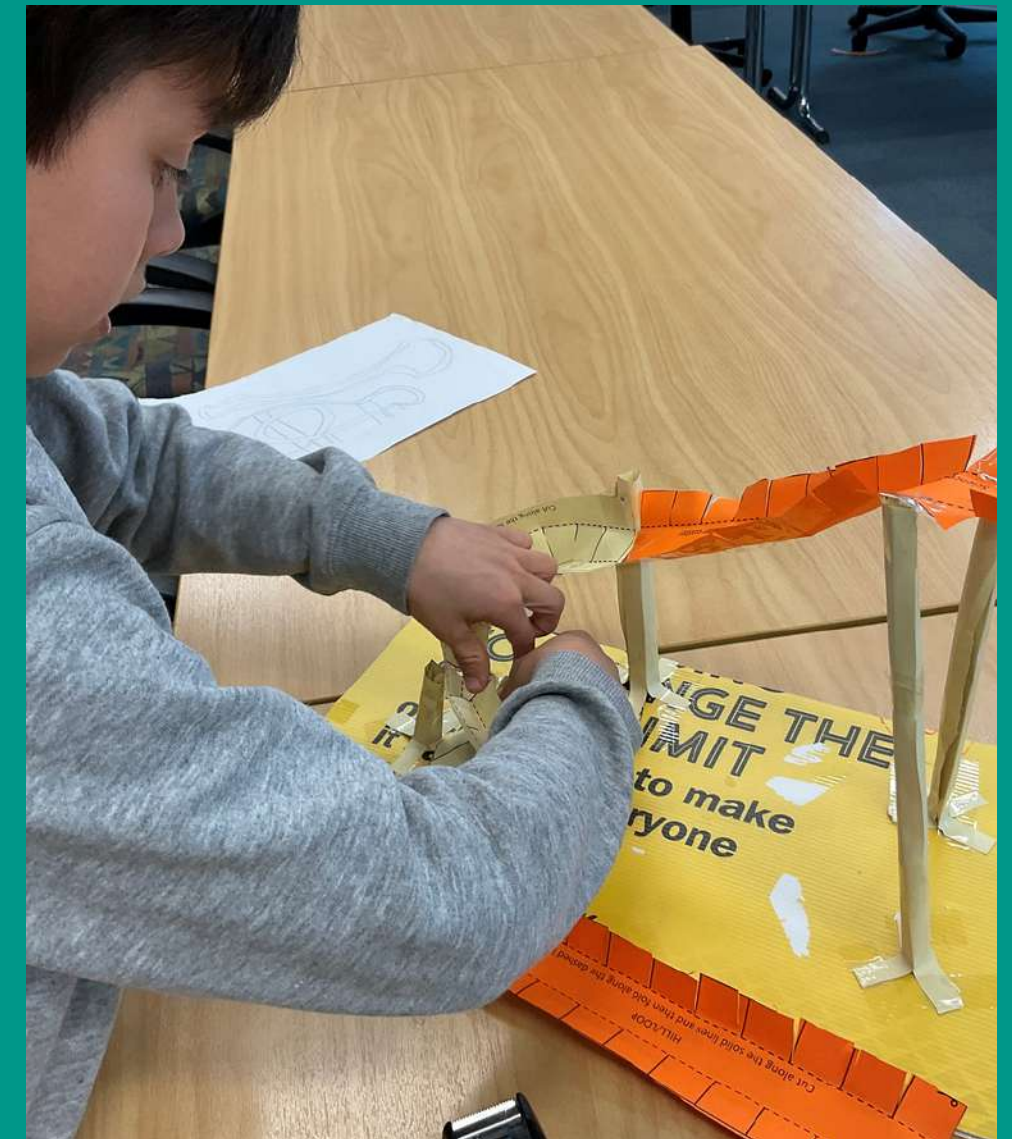
Active movement to music. Suitable for children 0-3 years. Term time.

Children's Programmes



School Holidays

We offer crafts and reading programmes during most school holidays.



Makerspace

Hands on science, technology, engineering, arts and maths for 8-13 years. Term time.



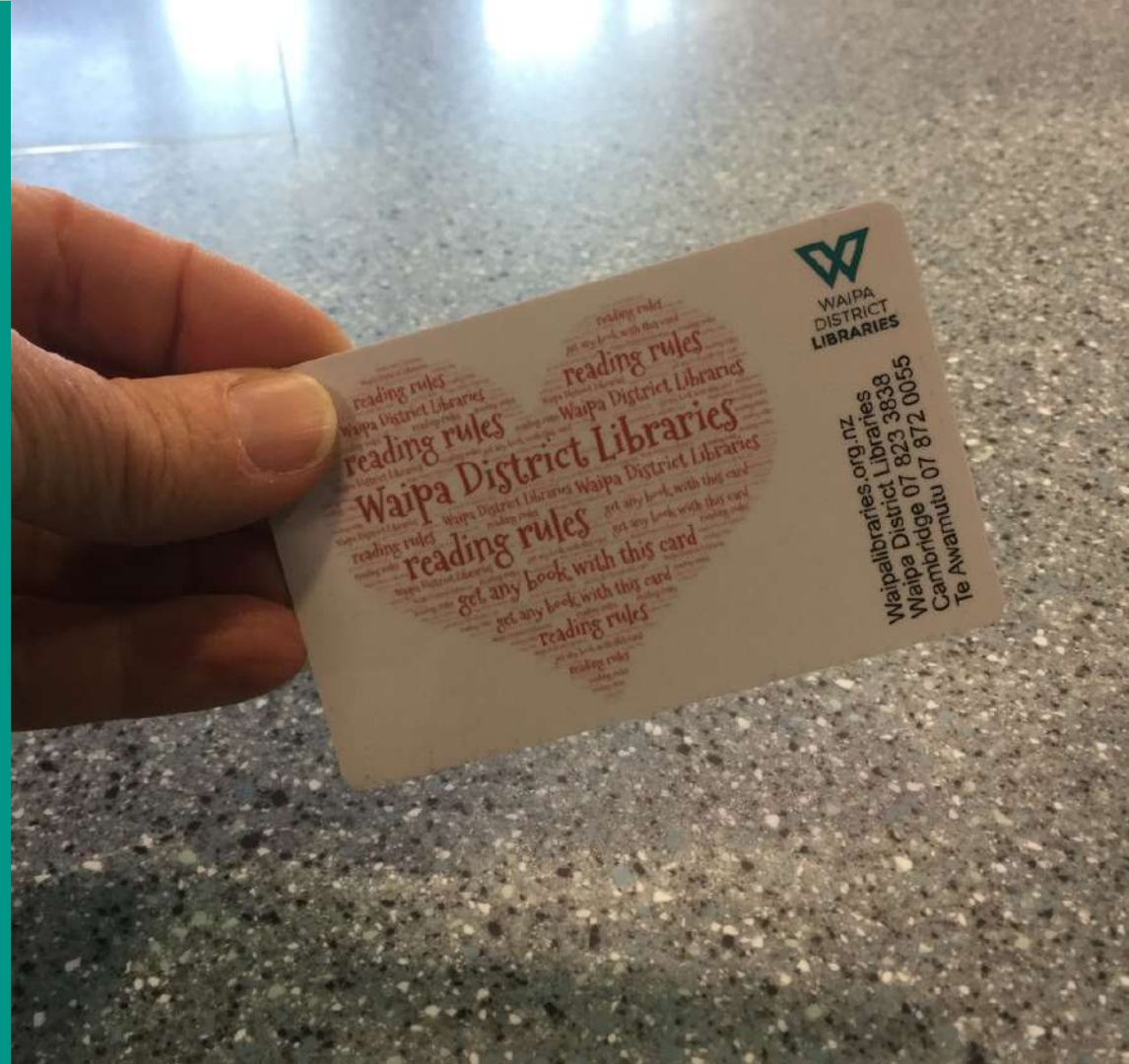
Things to note

You can take out 30 items on one library card. There is no charge for children's books and no overdue fees. Most items are issued for 3 weeks.

Something to take out?

Library card

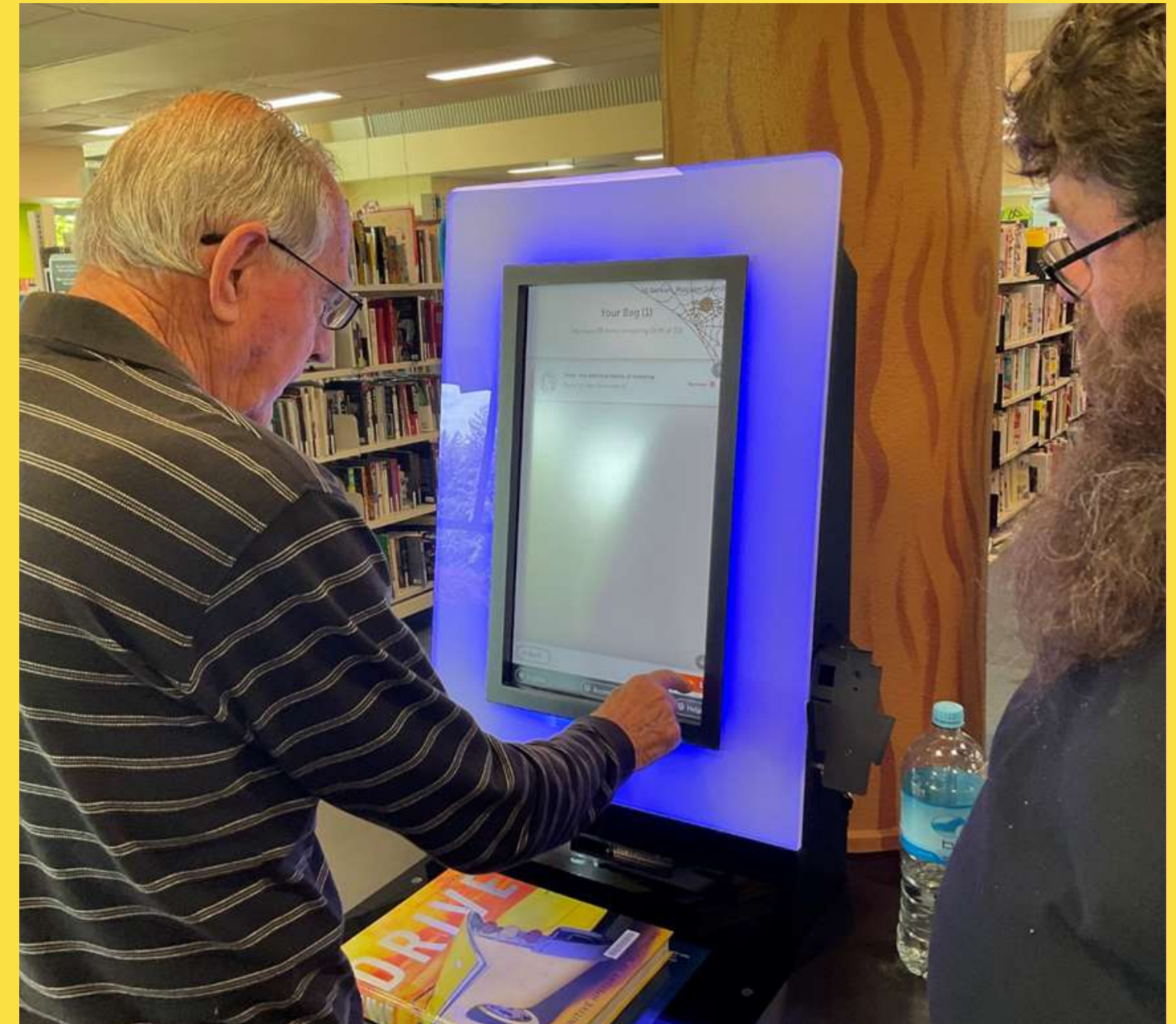
You will need your library card to take out any items. If you don't have a library card come with your caregiver to sign up for one.



If you have chosen some books come to the counter or a self issue machine to have them issued before you leave.

Self Issue

You can issue items yourself using our self issue machines. Scan your library card to start then follow the instructions.



Thanks for visiting!



If the gates beep on the way out
just come back to the counter.