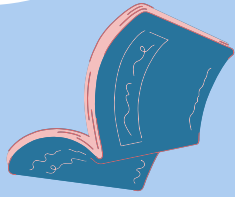


# GET LIT!

## WINTER READING CHALLENGE 2026



**Monday 15<sup>th</sup> June - Friday 28<sup>th</sup> August**

**CHILD**

**Open to members of Waipa District Libraries aged 5 to 12 years. The programme starts on Monday 15<sup>th</sup> June, and all entries must be returned by Friday 28<sup>th</sup> August.**

**You may complete as many challenge cards as you wish, however you will only be eligible to win one prize.**

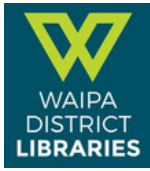


- ✓ **Complete FIVE challenges on one card to enter!**
- ✓ **Each challenge must be a DIFFERENT book.**
- ✓ **Prizes will be drawn on Tuesday 1<sup>st</sup> September**

**Name:** \_\_\_\_\_

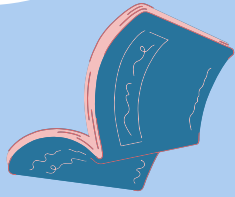
**Phone:** \_\_\_\_\_





# GET LIT!

## WINTER READING CHALLENGE 2026



**Monday 15<sup>th</sup> June - Friday 28<sup>th</sup> August**

**CHILD**

**Open to members of Waipa District Libraries aged 5 to 12 years. The programme starts on Monday 15<sup>th</sup> June, and all entries must be returned by Friday 28<sup>th</sup> August.**

**You may complete as many challenge cards as you wish, however you will only be eligible to win one prize.**



- ✓ **Complete FIVE challenges on one card to enter!**
- ✓ **Each challenge must be a DIFFERENT book.**
- ✓ **Prizes will be drawn on Tuesday 1<sup>st</sup> September**

**Name:** \_\_\_\_\_

**Phone:** \_\_\_\_\_

